

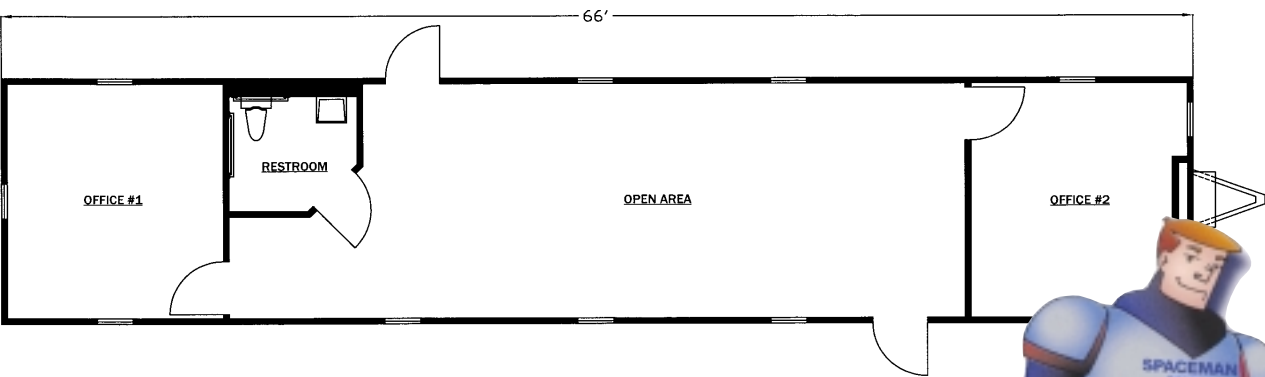
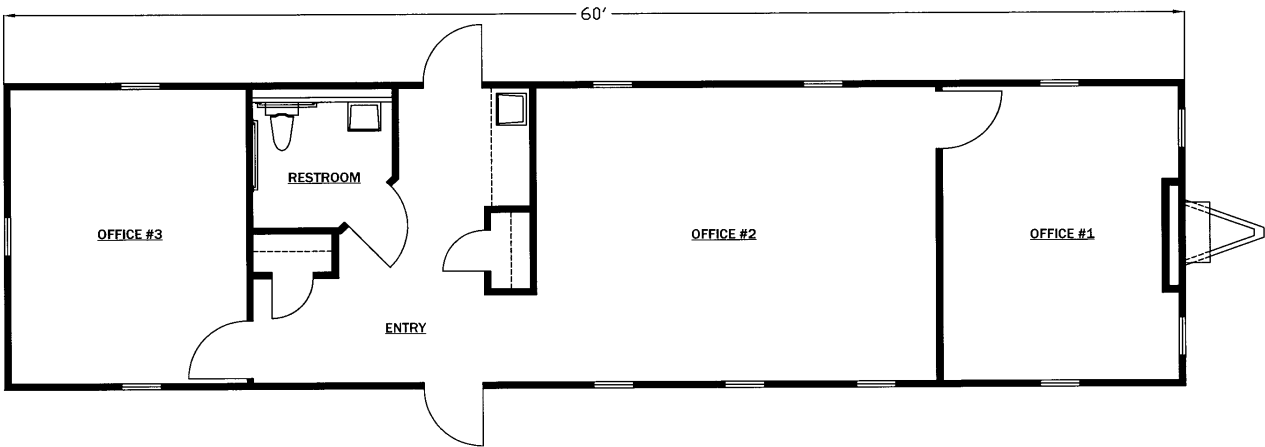
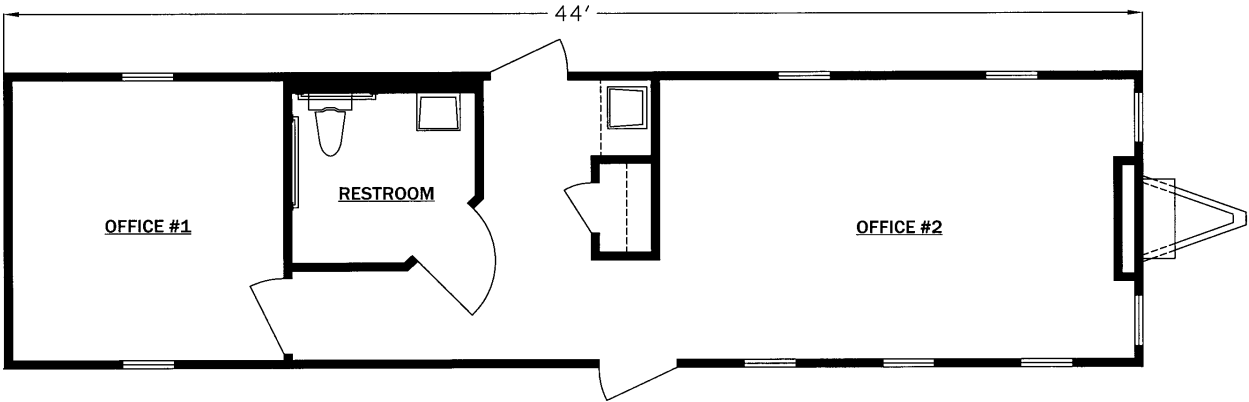


- **Quick Delivery**
- **Professional appearance**
- **Large Display/Reception Area**
- **Central HVAC**
- **Handicapped Accessible**
- **T1-11 Wood Sided**
- **Built to ISO Quality Standards**
- **Large Windows**
- **Carpet or Tile Flooring**
- **Permanent or Temporary**
- **Rent or Purchase**
- **Available in 12', 14' & 16' widths**

**1-800-221-4297**

**ISO 9000  
QUALITY CERTIFIED**

# Some of the Available Floorplans



# YOUR PLACE FOR SPACE

800-221-4297 • [www.McDonaldModular.com](http://www.McDonaldModular.com)